

Lithologies

- Metaquartzite
- Arkosic quartzite
- Calc-arkose
- Semi-pelitic gneiss and calc-silicate gneiss
- Amphibolite

Symbols

- Drill hole
- Interpreted faults
- Surface projection of currently known mineralized zones >0.05%U₃O₈
- Gulf historic resource outlines

D2 folds (F2)

6447500 N

574000 E

574500 E

6447000 N



6446500 N

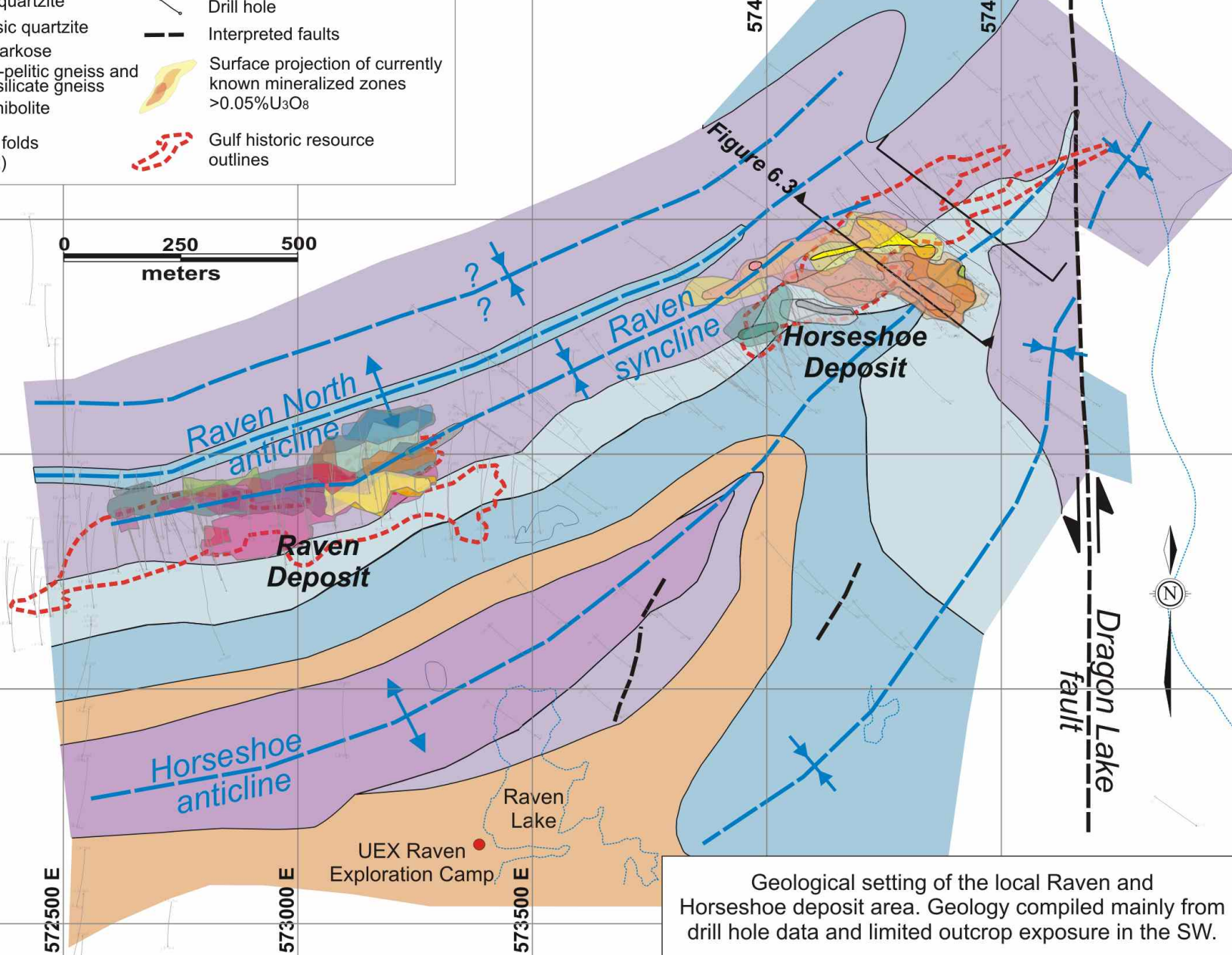
6446000 N

6445500 N

572500 E

573000 E

573500 E



UEx Raven
Exploration Camp

Raven
Lake

Geological setting of the local Raven and Horseshoe deposit area. Geology compiled mainly from drill hole data and limited outcrop exposure in the SW.