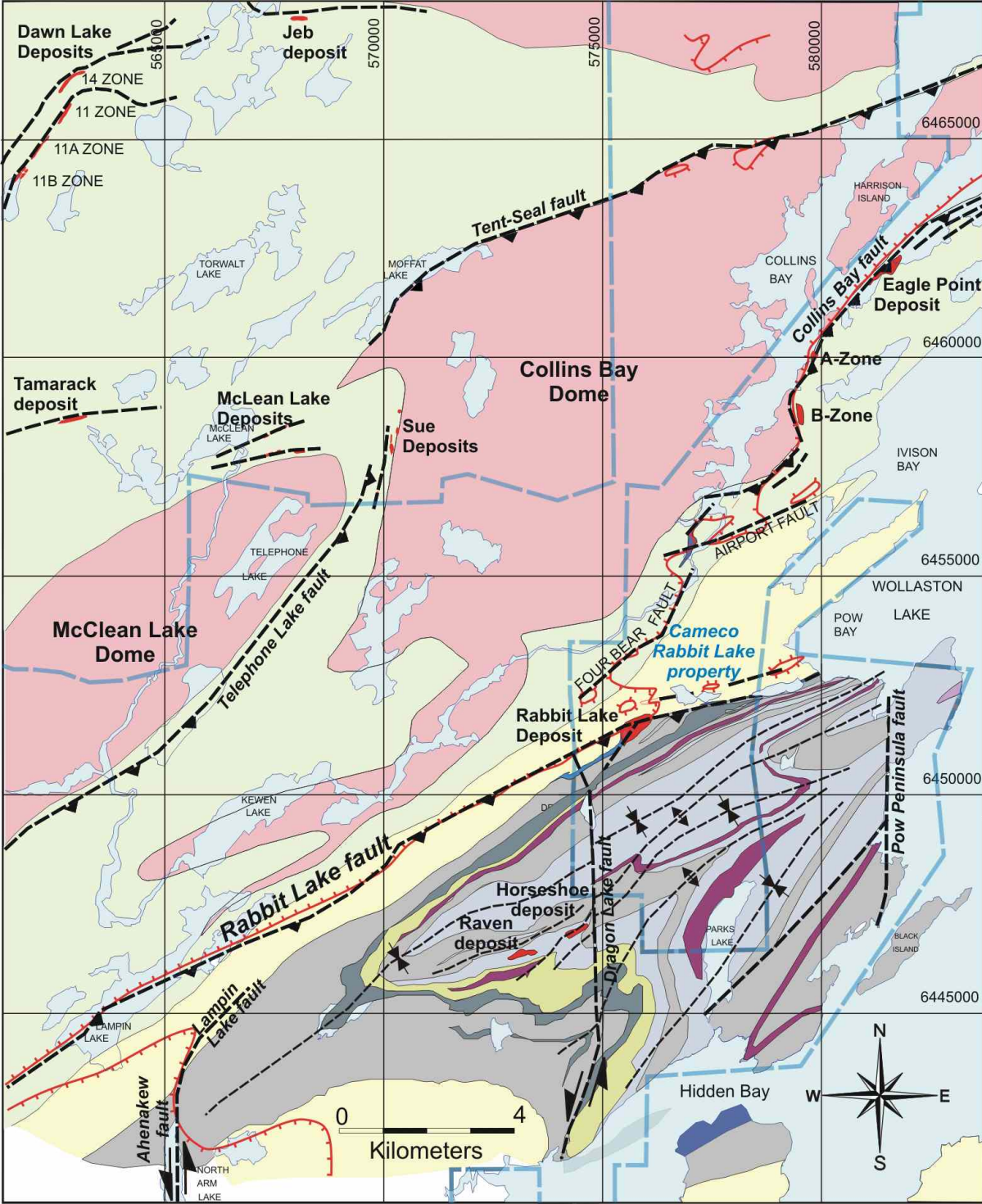



Pre-Athabasca Geology of the Hidden Bay area


(after Sibbald, 1983; Wallis, 1971
Rhys and Ross, 1999; UEX)




LOWER PELITIC GNEISS

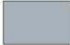
 Biotite-feldspar-quartz+garnet+sillimanite gneiss and schist; local graphitic gneiss

META-ARKOSE UNIT

 Massive to weakly foliated meta-arkose; locally albite-diopside (plagioclase) altered


 Dolomite+calc-silicate gneiss

HIDDEN BAY ASSEMBLAGE

 Calc-arkose, calc-silicate gneiss and biotite-quartz-feldspar gneiss

 Amphibolite

 Quartzite, arkosic quartzite

 Biotite gneiss, calc-arkose

 Biotite +/- sillimanite schist, graphitic gneiss


INTRUSIVE ROCKS


 Archean biotite granite

 Uranium deposits

 F2 anticline, syncline

 Strike slip (Tabbernor) faults

 Late D2 to post-Athabasca thrust faults

 Edge of overlying Athabasca sandstone cover: ticks point in the direction where sandstone is present

 Lakes and rivers

 Property boundaries